

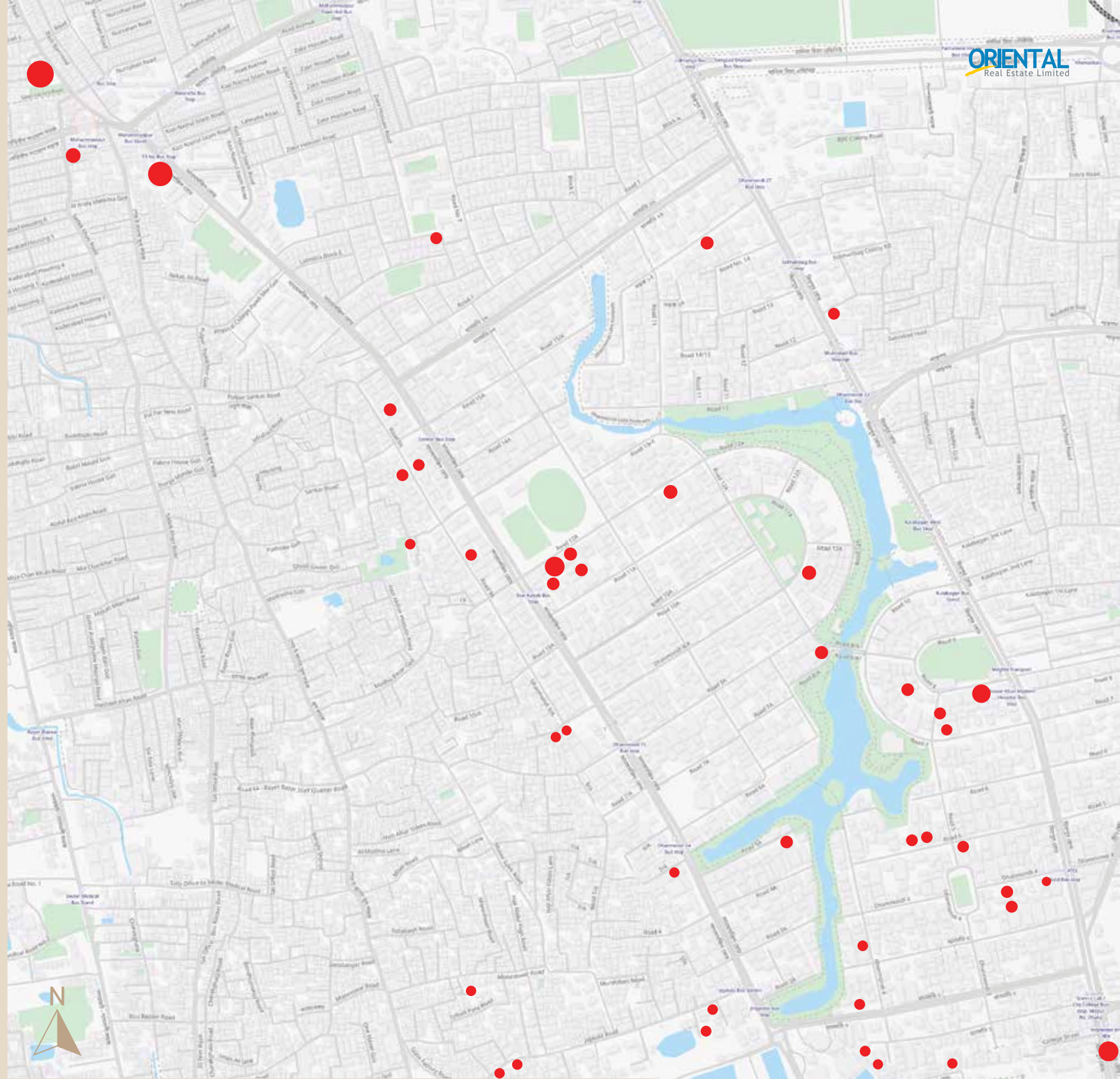
*Oriental Fairmont*  
Your new business address

# PRIME SPACE INFINITE POSSIBILITIES

Discover the perfect location for your business address at Oriental Fairmont, where prime commercial spaces are now available for restaurants, office spaces, showrooms, display centers, banks, and clinics. Strategically situated in a high-traffic area in Dhanmondi road 5/A, this modern building offers an unparalleled opportunity to attract a diverse clientele. Whether you're looking to serve delicious cuisine, offer essential banking services, display your products or provide top-tier healthcare, Oriental Fairmont provides the ideal environment with exceptional foot traffic, cutting-edge facilities and exceptional building construction quality.



HIGHLIGHTS  
OF SOME OF  
OUR SUCCESS  
STORIES  
IN  
DHANMONDI  
AND ITS  
SURROUNDING  
NEIGHBORHOOD



# PROJECT LOCATION

House: 75, Road: 5/A, Satmasjid Road, Dhanmondi, Dhaka 1205.



## CONVENIENCES NEARBY

### BANKS

SHIMANTO BANK  
TRUST BANK  
BRAC BANK  
EASTERN BANK

### RESTAURANTS

BURGER KING  
SECRET RECIPE  
NORTH END  
STAR HOTEL & KEBAB  
MANY MORE.....

### HOSPITALS

POPULAR  
MEDINOVA  
IBN SINA  
LABAID  
BANGALDESH MEDICAL COLLAGE  
BANGLADESH EYE HOSPITAL  
MANY MORE.....

### SHOPPING AND STORE

UNIMART  
AGORA  
CINEPLEX  
MEENA BAZAR  
SHIMANTA SQUARE  
ANAM RANGS PLAZA  
MANY MORE.....





## AT A GLANCE

MULTISTORIED COMMERCIAL SPACE

2500 SFT AREA PER FLOOR

SPACIOUS GROUND FLOOR WITH SURFACE PARKING

DOUBLE HEIGHT GROUND FLOOR

CCTV CAMERA MONITORING

FRONT CURTAIN GLASS

CONTEMPORARY DESIGN

HIGH SPEED ELEVATOR

BACK UP GENERATOR



# BUILD YOUR BUSINESS IN THE HEART OF IT ALL

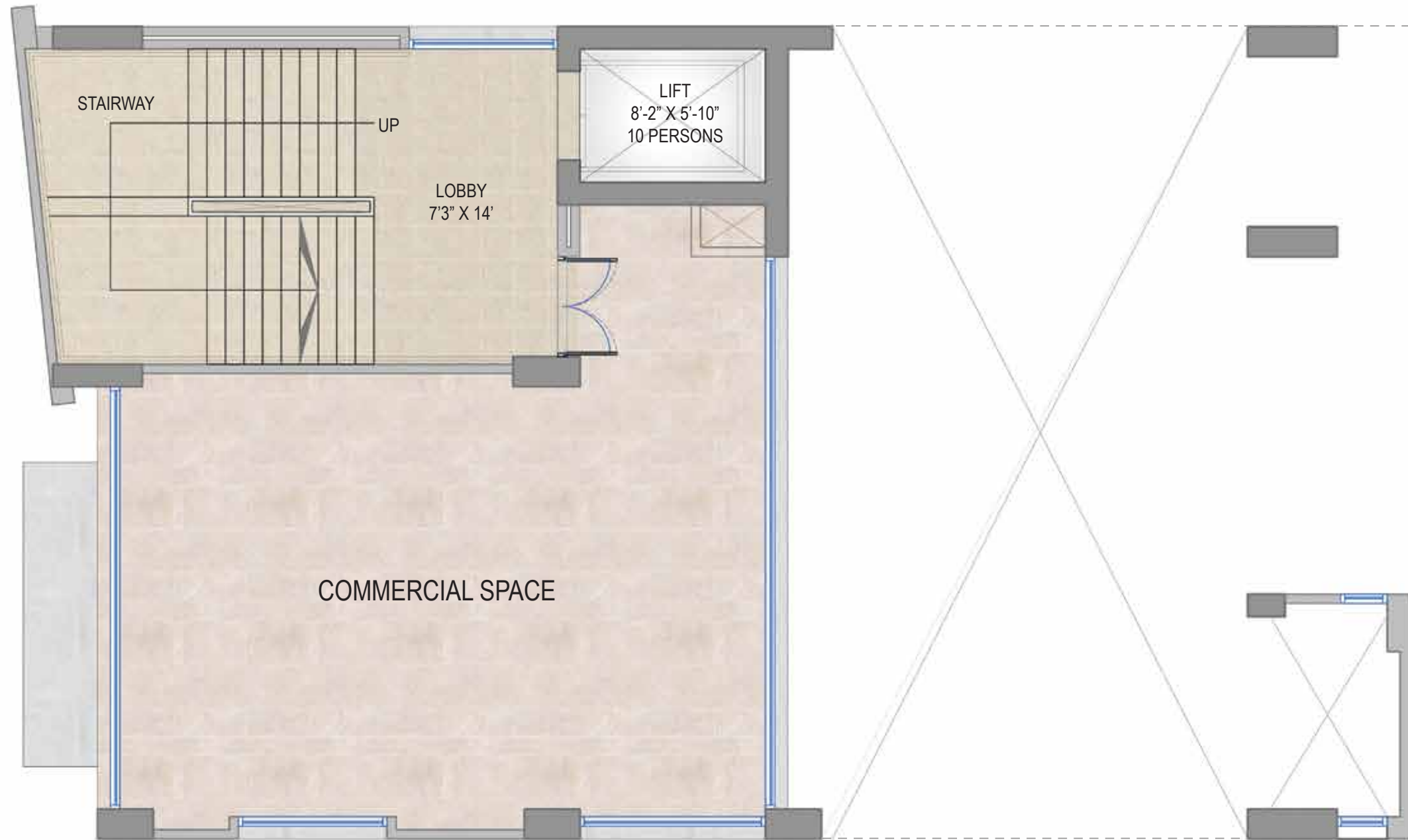
The location is ideally situated near several educational institutions and hospitals, including Maple Leaf International School, Bangladesh Medical College, Popular Hospital, Medinova, and IBN Sina. The building's prime location offers easy access, allowing customers to avoid the congestion of Satmasjid Road for a seamless experience.

ORIENTAL

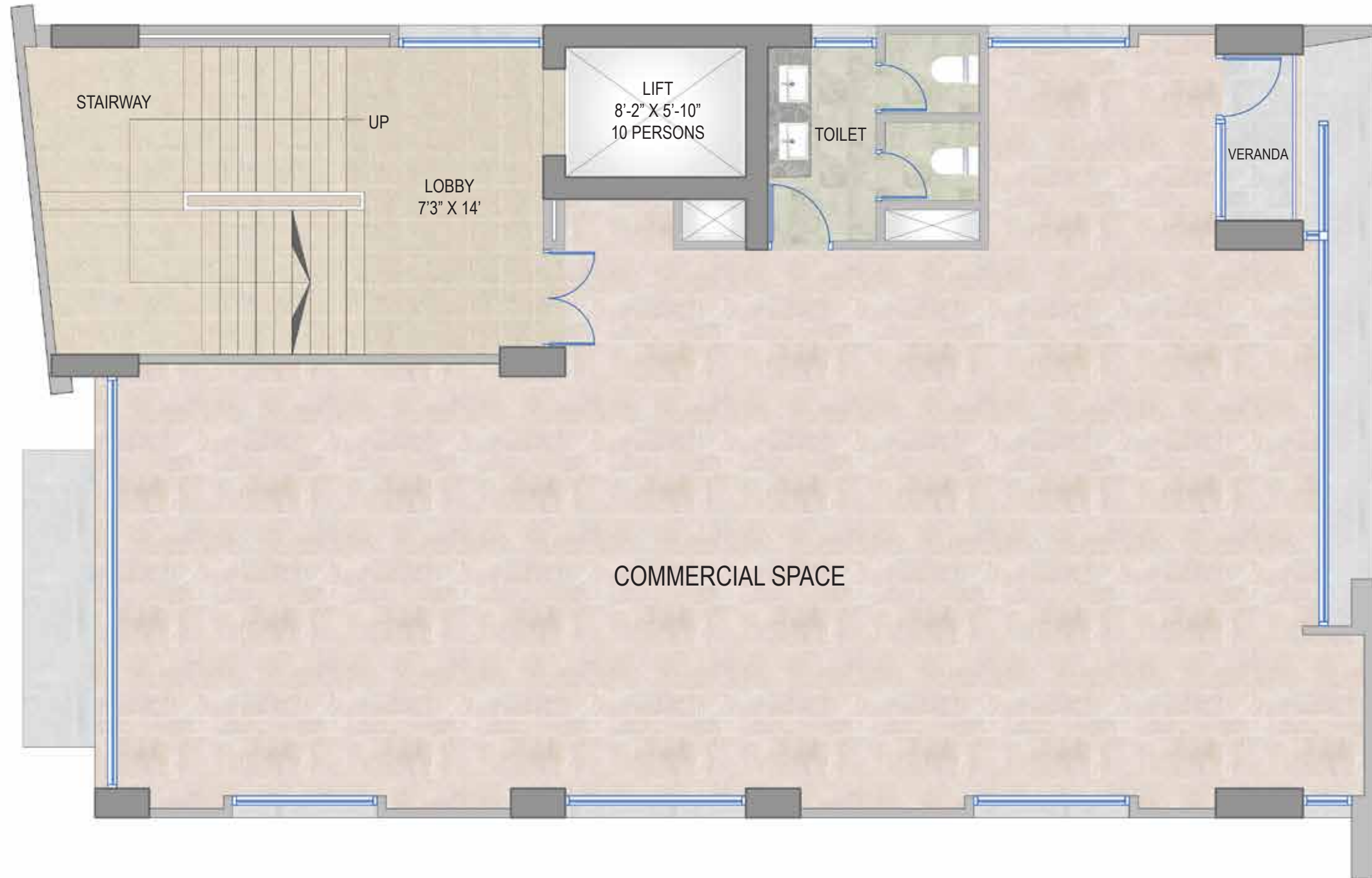


 **GROUND FLOOR PLAN**

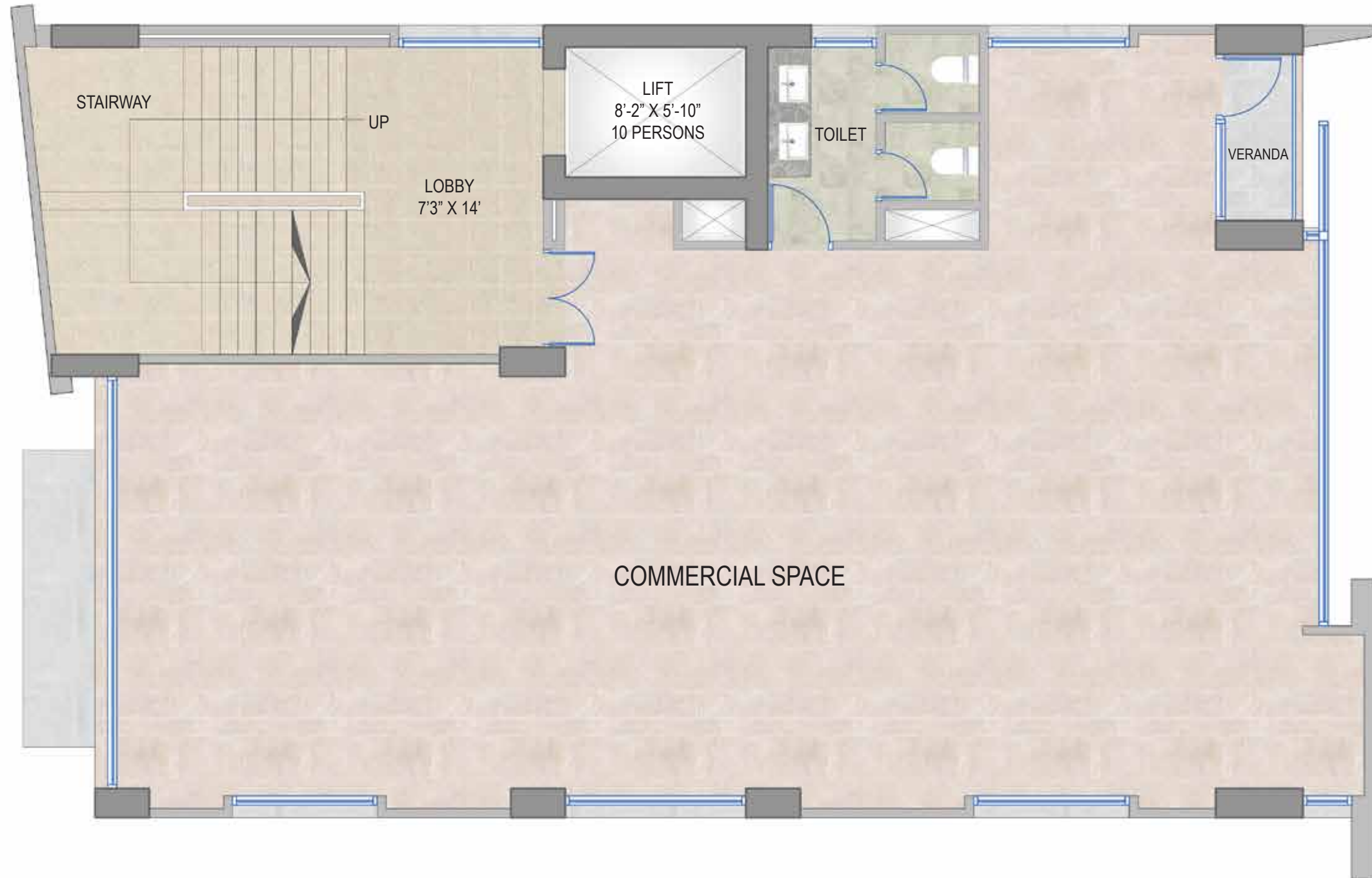




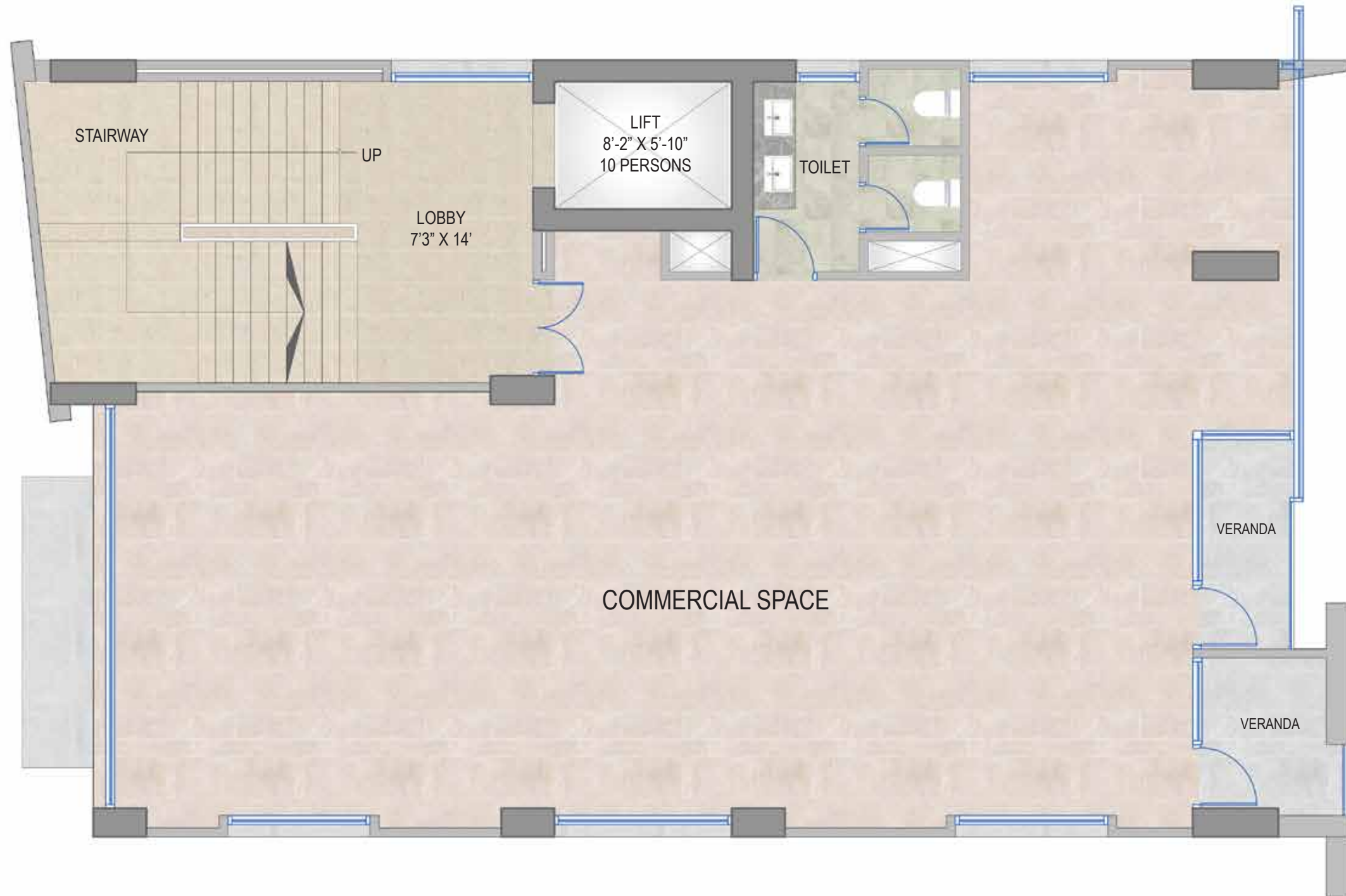
 MEZZANINE FLOOR PLAN



 1ST FLOOR PLAN



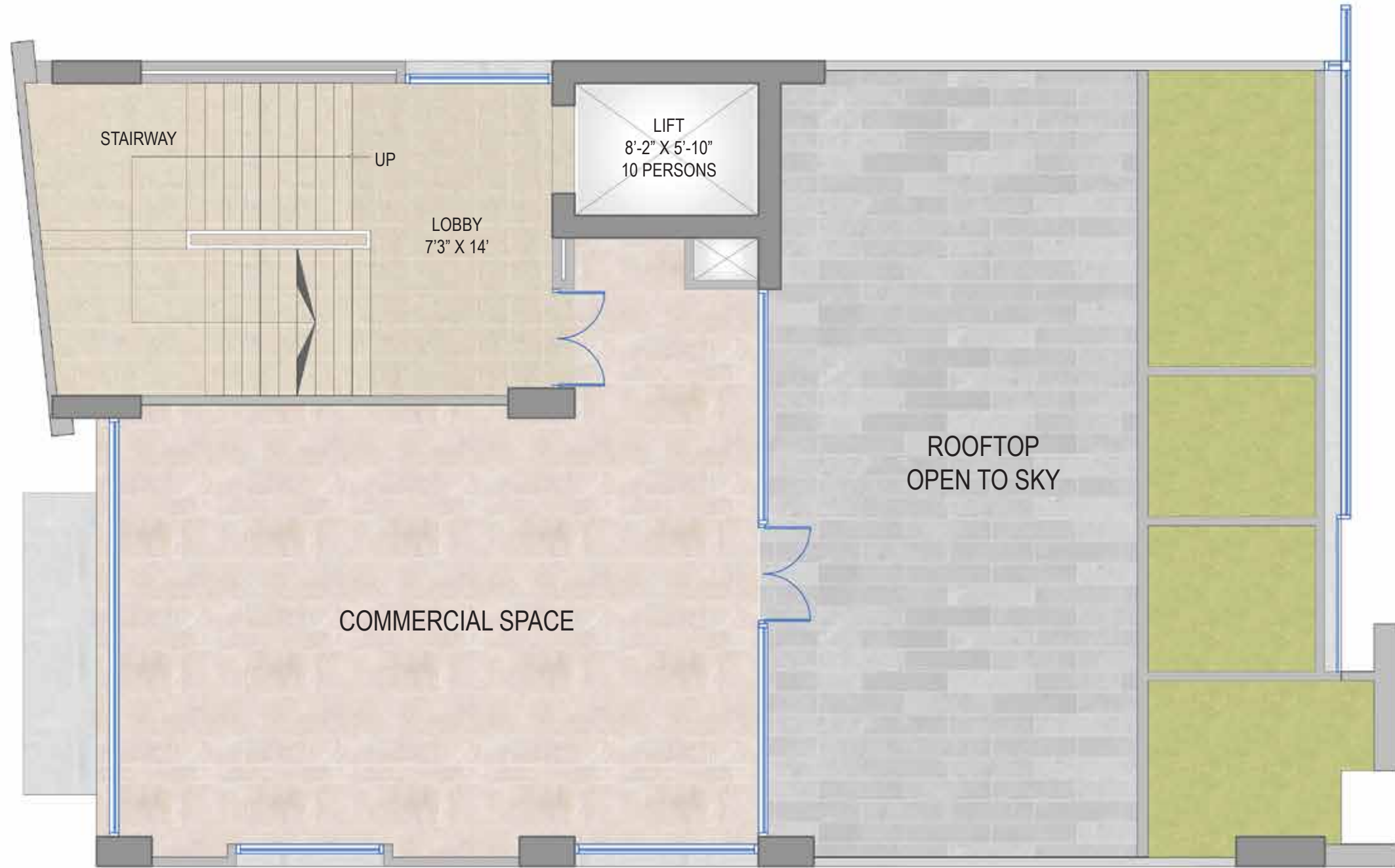
 2ND- 4TH FLOOR PLAN



 **5TH FLOOR PLAN**



 **6TH FLOOR PLAN**



 **ROOF FLOOR PLAN**



 **BASEMENT FLOOR PLAN**

# LUXURY SIMPLIFIED

---

Whether you're looking to expand or establish your business, this property provides the ideal setting for growth and success.





# ORIENTAL DESIGN STUDIO

WE ARE HERE TO CATER TO YOUR PERSONAL NEEDS

## OUR SERVICES INCLUDES

DESIGN CONSULTATION  
INTERIOR DESIGN AND DRAWING  
INTERIOR CONSTRUCTION WORK  
3D RENDERED IMAGES  
ANIMATION  
LANDSCAPE DESIGN

**WE PROVIDE  
PREMIUM DESIGN  
AND CONSTRUCTION**



# SPECIFICATIONS

<b>Structure</b>	Reinforced Concrete		
<b>Wall</b>	Machine Made Bricks		
<b>Facilities</b>	Ground Floor For Car Parking. Superior quality IFE / Similar lifts from internationally reputed manufactures with stoppage in each floor. Sub-Station for adequate power supply. Fire fighting equipments. World Class eco-friendly, low noise Airman Generator (Made in Japan) for backup support		
<b>Doors</b>	Main Entrance	Glass	
	Toilets	Eco Woods Composite Wooden Door	
<b>Frame</b>	All Frame	Eco Woods Composite Wooden Frame	
<b>Windows</b>	Aluminium Framed Window		
<b>Floor Finishes</b>	Commercial space	OREL Std. Tiles Size 24 X 24 Sft	
	All Toilets	Ceramic Tiles Size 12 X 24 Sft	
<b>Stair</b>	Staircases	Stair Tiles OREL Std	
<b>Others</b>	Car Porch	Parking Tiles OREL Std	
<b>Utility Lines</b>	LPG Gas Line Electric Line from DESCO Water Line from WASA		
<b>Telephone &amp; Electrical Installation</b>	Light Point Power Point Air-conditioner Point Telephone Point TV Point Intercom Point Bell Point 3-phase Wiring Exhaust fan Point		As per OREL Std
<b>Finishes</b>	All Other bathrooms Others Plaster & Paint	Ceiling-height Ceramic Tiles Ceiling-height Ceramic Tiles	
<b>Painting</b>	BERGER paints as per OREL Std		
<b>Sanitary Wares</b>	WC		2 per floor
	Wash Basin	Basin counter with marble top	2 per floor
<b>Fittings</b>	All Toilets will be Orel Std.		

**ORIENTAL**  
Real Estate Limited

*Reach us at*

01700770006

01700770005

ROAD – 04, HOUSE – 15, DHANMONDI R/A, DHAKA – 1205  
PHONE: +88 02 58611178, 58611179, 58611180, 9665806

[www.facebook.com/orientalgroubpd](https://www.facebook.com/orientalgroubpd)  
[www.orientalgroubpd.com](http://www.orientalgroubpd.com)  
email: [orel@orientalgroubpd.com](mailto:orel@orientalgroubpd.com)